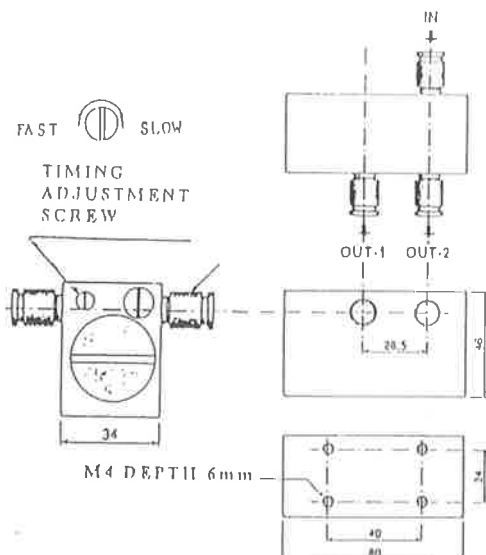


# VESSEL®

PRODUCT OF JAPAN

# GT-TC-02

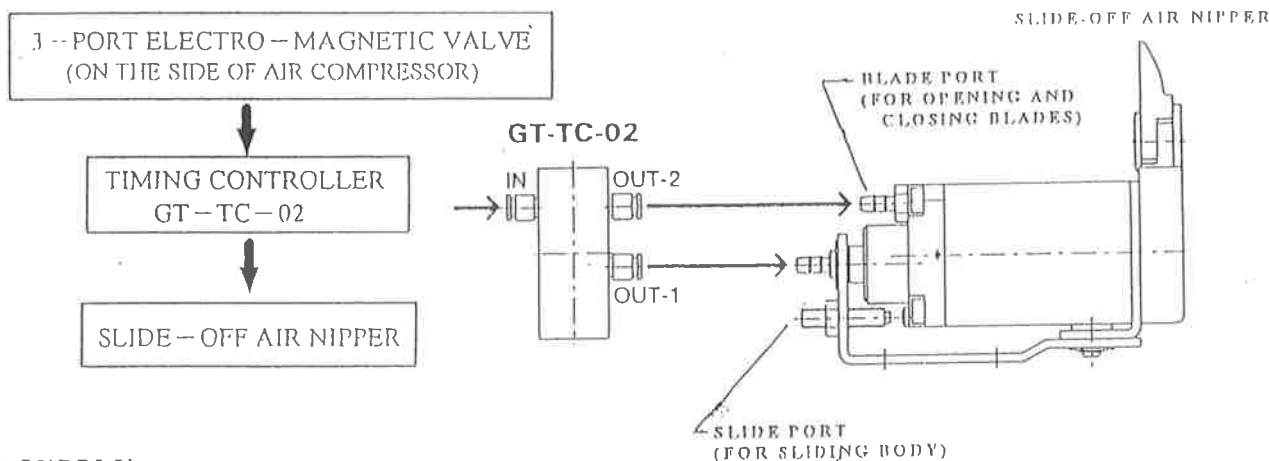
# TIMING CONTROLLER



## SPECIFICATIONS

BODY WEIGHT	275 g
RECOMMENDED AIR PRESSURE	0.6 MPa
AIR HOSE OUTER DIA.	6 mm
APPLICABLE VESSEL AIR NIPPERS	GT-NT Series GT-NY Series GT-NB20

CONNECTED IN BETWEEN THE COMPRESSOR AND SLIDE-OFF AIR NIPPERS, THIS TIMING CONTROLLER ADJUSTS THE TIMING OF SLIDE AND CUT WITH WIDE CONTROL RANGE AND EASILY ADJUSTABLE TIMING.



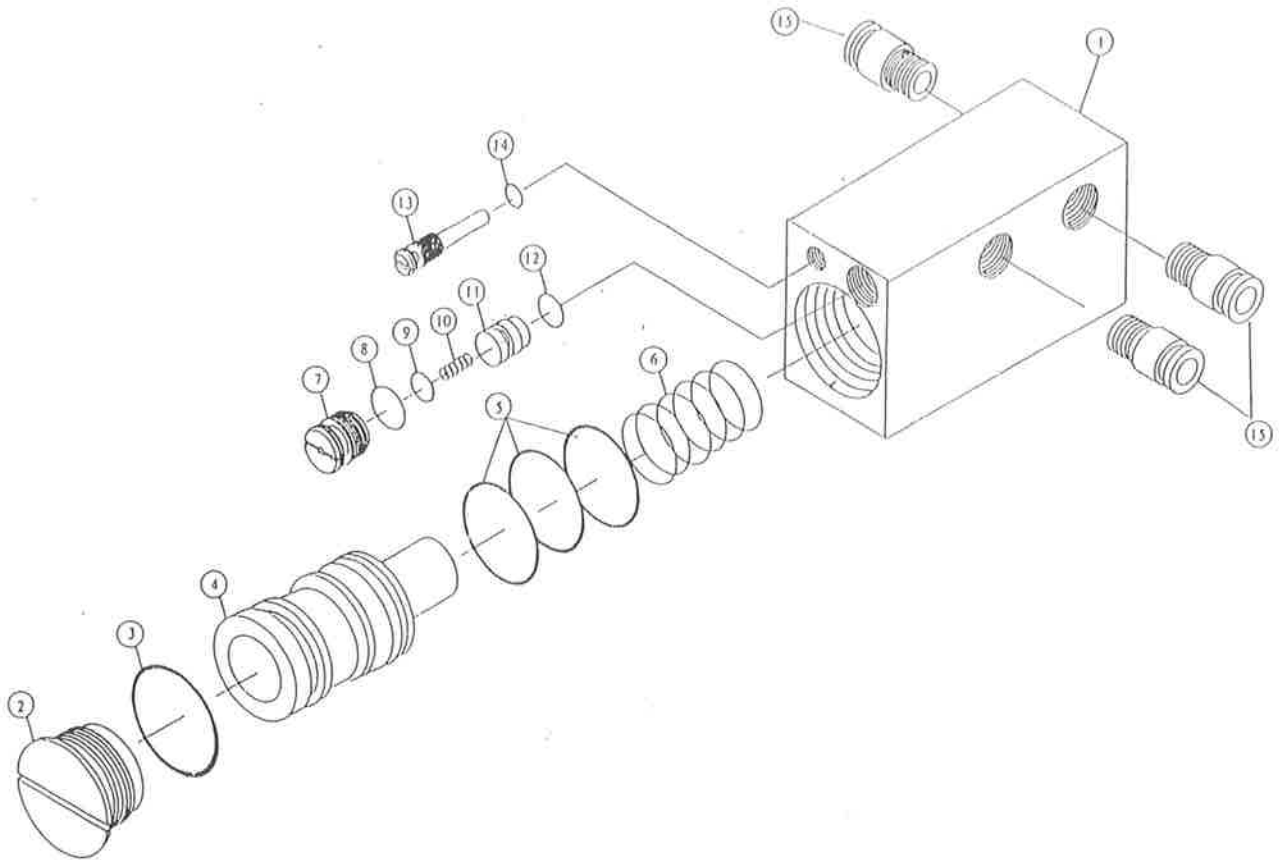
## AIR SUPPLY

- MORE THAN 1 HP AIR COMPRESSOR IS REQUIRED TO OPERATE THE AIR NIPPER. SINCE AIR FROM AIR COMPRESSOR CONTAINS MUCH MOISTURE AND DUST, IT IS DESIRABLE TO PROVIDE A FILTER AND AN OILER IN THE PIPE LINE TO REMOVE SUCH UNDESIRABLE ELEMENTS. ALSO DRAIN THE WATER FROM AIR TANK EVERYDAY. THESE MAINTENANCE PROCEDURES WILL AVOID PROBLEMS IN SHORT-TERM USAGE.
- PLEASE PAY CAREFUL ATTENTION TO THE DUST INSIDE OF AIR HOSE OR PIPE LINE. WHEN USING BRAND NEW TOOL OR AIR HOSE, BLOW AND CLEAN THE INSIDE OF AIR HOSE OR PIPE LINE BEFORE INSTALLATION. DUST STUCK INSIDE OF AIR HOSE WILL RESTRICT AIR FLOW DURING LONG TIME USE. REGULAR MAINTENANCE CHECKS ARE THE SECRET OF THE LONG LIFE OF TOOL.
- THIS TIMING CONTROLLER IS DESIGNED TO WORK WITH THE PRESSURE AT 0.55 MPa - 0.6 MPa RIGHT BEFORE THE TOOL. EXCESSIVE AIR PRESSURE CAN CAUSE BROKEN BLADE, SHORT LIFE AND OTHER PROBLEMS. LOW AIR PRESSURE WILL RESULT IN INEFFECTIVE PERFORMANCE OR NON-CUTTING. PLEASE OPERATE THE TOOL WITHIN THE SPECIFIED AIR PRESSURE.

## MAINTENANCE

- NEVER TRY TO CLOSE THE BLADES WITHOUT APPLYING ANY ACTUAL CUTTING MATERIAL, AS IT WILL SHORTEN THE BLADE LIFE.
- FOR YOUR SAFETY, WHEN REPLACING BLADES, ALWAYS STOP THE AIR INLET TO THE AIR NIPPER FROM BOTH PORTS OR DISCONNECT THE AIR HOSE.
- PLACE A FEW DROPS OF OIL TO THE MOVING PART OF THE BLADES 2-3 TIMES A DAY FOR A LONGER BLADE LIFE.

# GT-TC-02



Index No.	Part No.	Description	Number Required
1	854501	Housing	1
2	854502	Cap, Main	1
3	854503	O-Ring S25, Main Cap	1
4	854504	Piston, Main	1
5	854505	O-Ring P21, Main Piston	3
6	854506	Spring, Main	1
7	854507	Subcap	1
8	854508	O-Ring(Outer) P8, Subcap	1
9	854509	O-Ring(Inner) P4 Subcap	1
10	854510	Subspring	1
11	854511	Subpiston	1
12	854512	O-Ring P5, Subpiston	1
13	854513	Screw, Timing Adjustment	1
14	854514	O-Ring P3, Timing Adjustment Screw	1
15	854515	Tube Joint POC-6-01	3