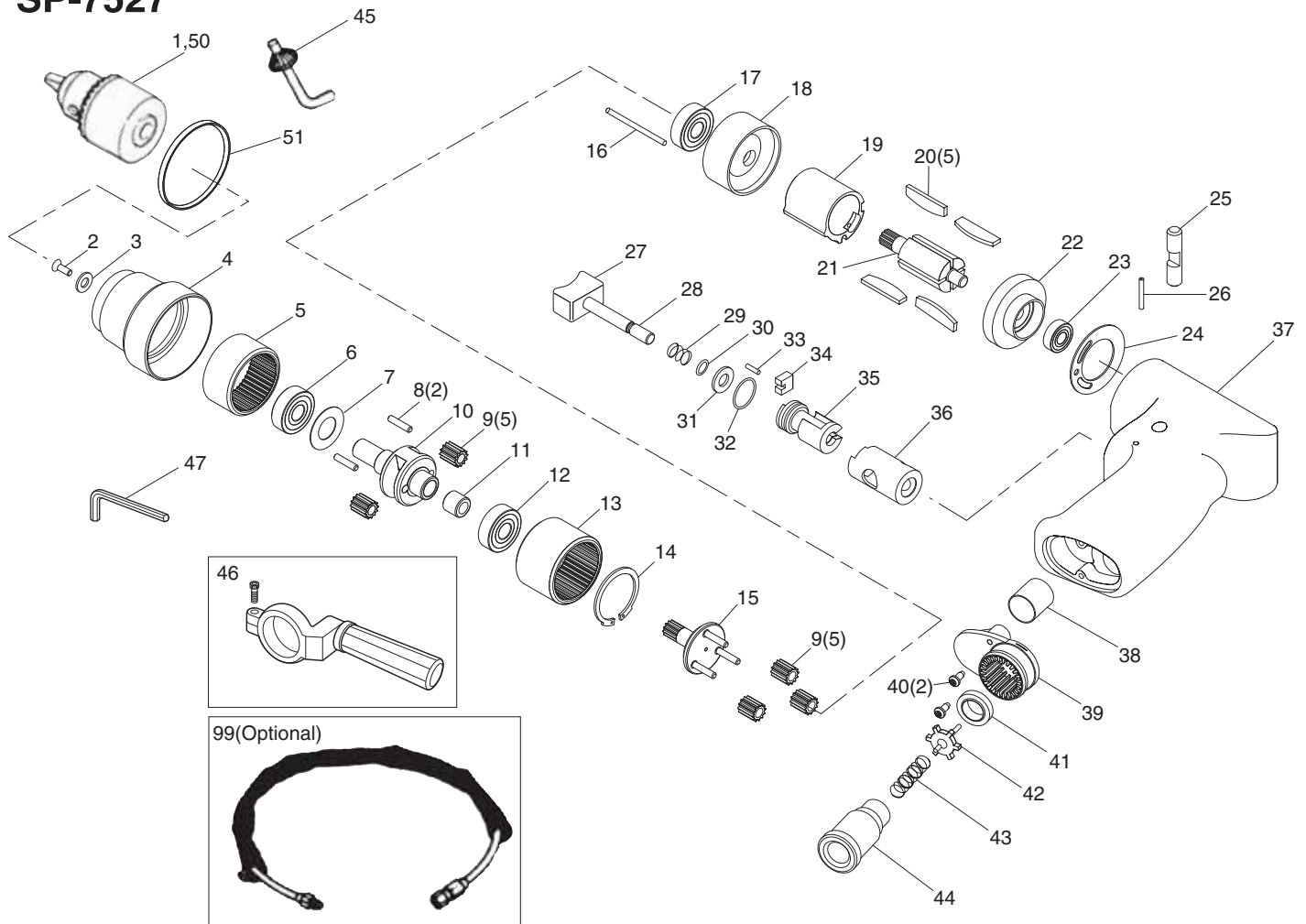


1/2" AIR DRILL

EXPLODED VIEW SP-7527



PARTS LIST

| Index No. | Parts No. | Description | Qty. Per tool |
|-----------|-----------|-----------------|---------------|
| 1 | 7527-01 | Drill Chuck | 1 |
| 2 | 7527-02 | Screw | 1 |
| 3 | 7527-03 | Chuck Spacer | 1 |
| 4 | 7527-04 | Clamp Nut | 1 |
| 5 | 7527-05 | Internal Gear | 1 |
| 6 | 7527-06 | Ball Bearing | 1 |
| 7 | 7527-07 | Washer | 1 |
| 8 | 7527-08 | Planet Gear Pin | 2 |
| 9 | 7527-09 | Planet Gear | 5 |
| 10 | 7527-10 | Planet Carrier | 1 |
| 11 | 7527-11 | Needle Bearing | 1 |
| 12 | 7527-12 | Ball Bearing | 1 |
| 13 | 7527-13 | Internal Gear | 1 |
| 14 | 7527-14 | Retaining Ring | 1 |
| 15 | 7527-15 | Planet Carrier | 1 |
| 16 | 7527-16 | Motor Pin | 1 |
| 17 | 7527-17 | Ball Bearing | 1 |
| 18 | 7527-18 | Front End Plate | 1 |
| 19 | 7527-19 | Cylinder | 1 |
| 20 | 7527-20 | Rotor Blade | 5 |
| 21 | 7527-21 | Rotor | 1 |
| 22 | 7527-22 | Rear End Plate | 1 |
| 23 | 7527-23 | Ball Bearing | 1 |
| 24 | 7527-24 | Motor Gasket | 1 |
| 25 | 7527-25 | Reverse Button | 1 |
| 26 | 7527-26 | Roll Pin | 1 |
| 27 | 7527-27 | Trigger | 1 |
| 28 | 7527-28 | Valve Shaft | 1 |
| 29 | 7527-29 | Spring | 1 |

| Index No. | Parts No. | Description | Qty. Per tool |
|-----------|-----------|-----------------------------|---------------|
| 30 | 7527-30 | O-Ring | 1 |
| 31 | 7527-31 | Washer | 1 |
| 32 | 7527-32 | O-Ring | 1 |
| 33 | 7527-33 | Needle Roller | 1 |
| 34 | 7527-34 | Slide Plate | 1 |
| 35 | 7527-35 | Reverse Valve | 1 |
| 36 | 7527-36 | Reverse Bush | 1 |
| 37 | 7527-37 | Motor Housing | 1 |
| 38 | 7527-38 | Silencer | 1 |
| 39 | 7527-39 | Deflector | 1 |
| 40 | 7527-40 | Screw | 2 |
| 41 | 7527-41 | Valve Seat | 1 |
| 42 | 7527-42 | Valve | 1 |
| 43 | 7527-43 | Valve Spring | 1 |
| 44 | 7527-44 | Air Inlet | 1 |
| 45 | 7527-45 | Chuck Key | 1 |
| 46 | 7527-46 | Handle Kit | 1 |
| 47 | 7527-47 | Hexagon Wrench | 1 |
| 50 | 7527-50 | Key Less Chuck | 1 |
| 51 | 7527-51 | Ring | 1 |
| 99 | 7527-99 | Exhaust Hose Set (Optional) | 1 |